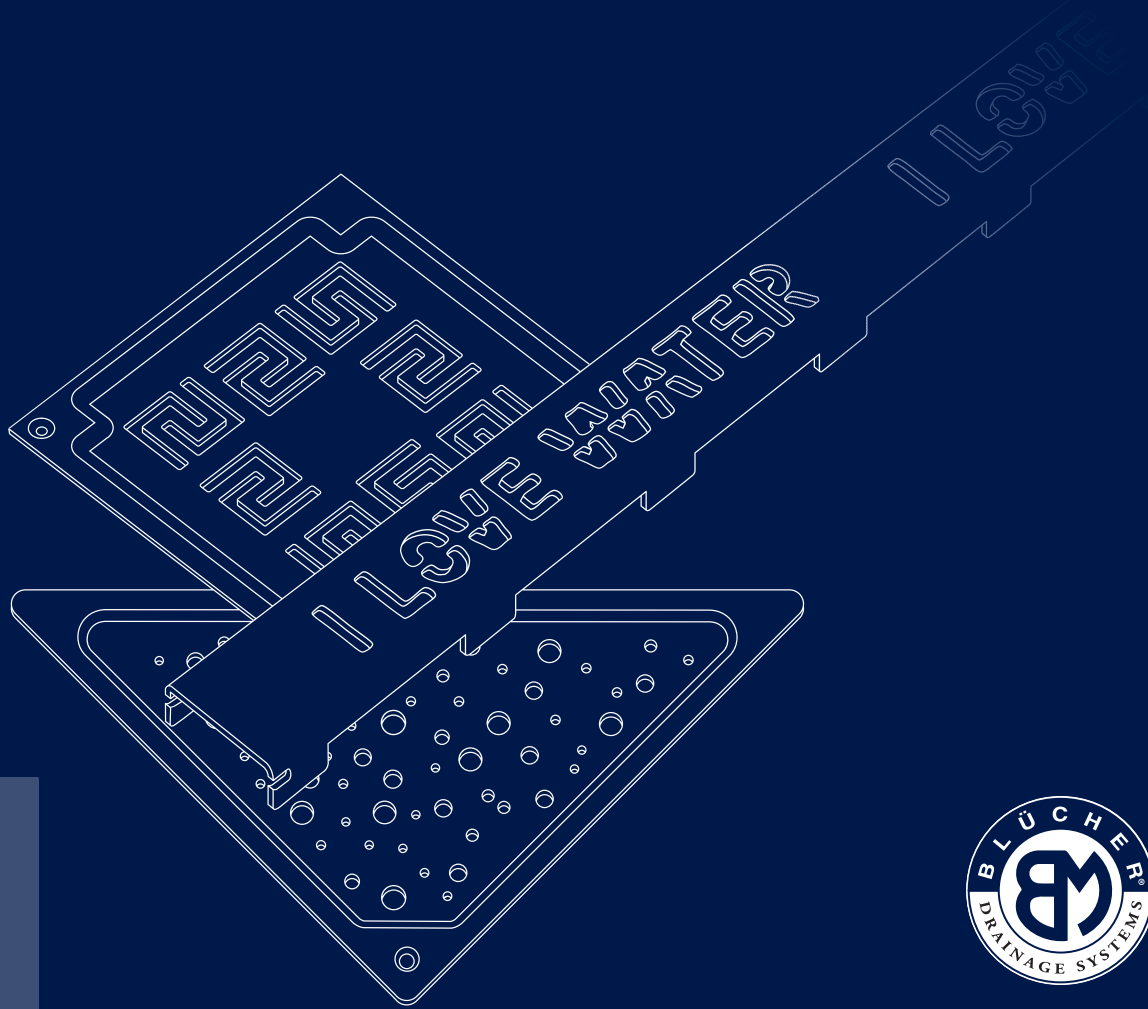


BLÜCHER® Drain Design

Product catalogue for design drains



BLÜCHER®

K E E P I N G U P T H E F L O W

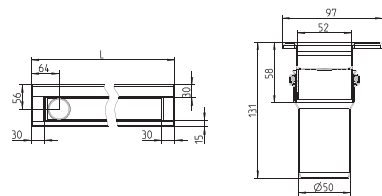
STAINLESS STEEL DRAINAGE SYSTEMS

WaterLine shower channels for concrete floors

For details on shower channels with membrane solution see www.blucher.com



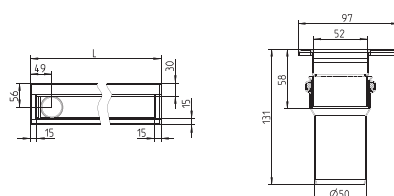
Against 3 walls type 171



Type No.	Length
171.070.056.20	700
171.080.056.20	800
171.090.056.20	900
171.100.056.20	1000



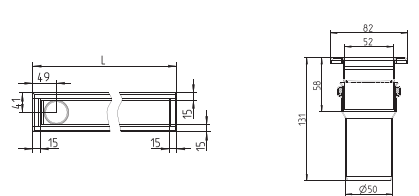
Against 1 wall type 174



Type No.	Length
174.030.056.20	300
174.070.056.20	700
174.080.056.20	800
174.090.056.20	900
174.100.056.20	1000



Free placing type 175



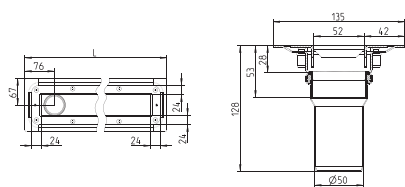
Type No.	Length
175.070.056.20	700
175.080.056.20	800
175.090.056.20	900
175.100.056.20	1000

Grates and traps sold separately.

WaterLine shower channels for vinyl floors



Free placing type 275

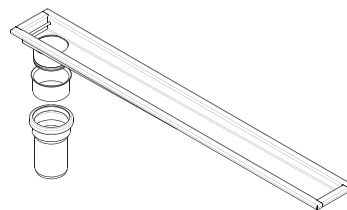


Type No.	Length
275.070.056.20	700
275.080.056.20	800
275.090.056.20	900
275.100.056.20	1000

Grates and traps sold separately.

Special channels

Special channels are available on request. Please see full product list on www.blucher.com



Benefits

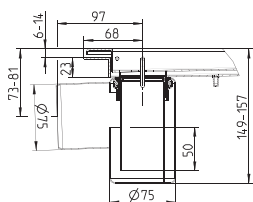
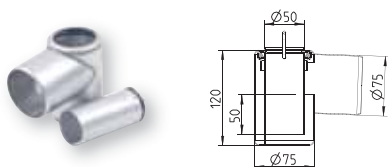
- Can be placed wherever you like
- Removable trap allows full rodding
- Simple and modern
- Choice of 6 grates
- Built in rat stop
- Easy to install
- Double edge for tiling onto

The channels have been designed so that where they meet a wall they have double width edges. This is so that when the tiles are fixed to the wall they cover some of the edge making all edges equal in appearance. To see an installation video log on to www.blucher.com

Accessories for WaterLine shower channels

Water trap

Type No	Seal	Flow
510.000.075	50 mm	0,8 l/s

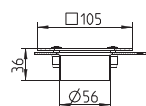


Trap in channel

NB! Traps need to be purchased at time of order as they require installing under the channel and therefore cannot be retro fitted.

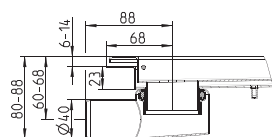
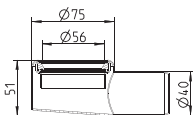
Adaptor for sheet membrane

Type No	Seal	Flow
326.005.000	50 mm	0,8 l/s



Lower part

Type No.	Outlet size
620.300.028	Ø40mm

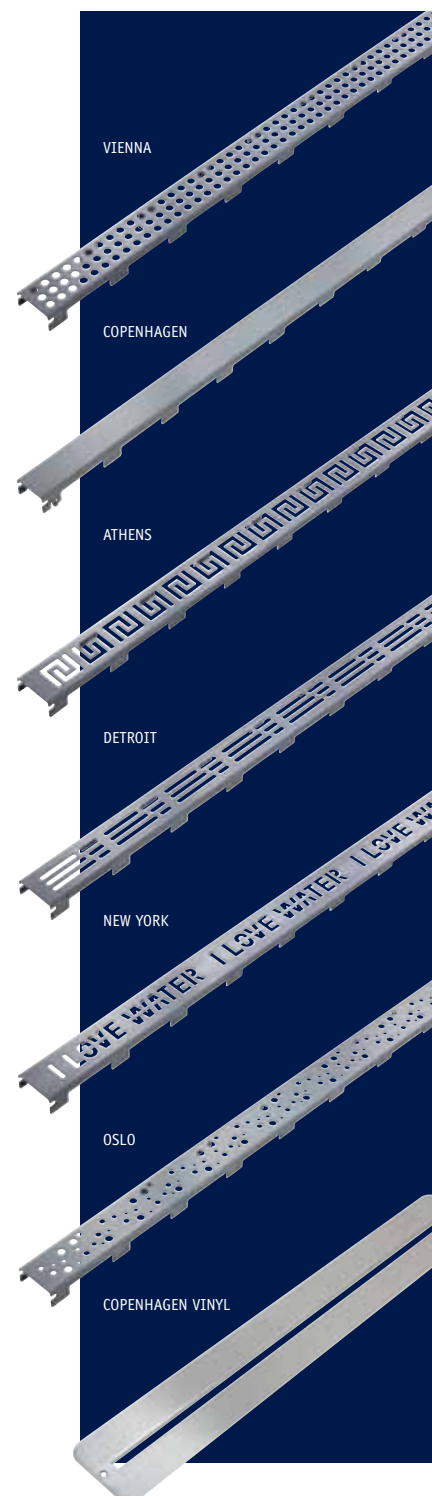


Outlet and channel

For connection to outlet with existing trap.

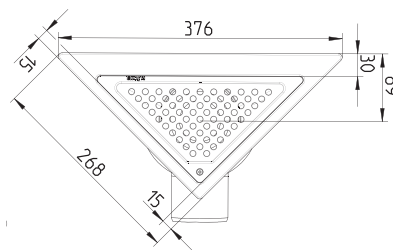
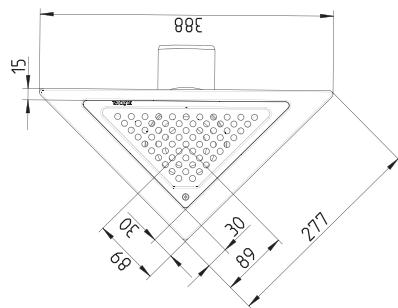
Grating

Type no.	Grate style	Length
697.003.030	LINE VIENNA	300
697.003.070	LINE VIENNA	700
697.003.080	LINE VIENNA	800
697.003.090	LINE VIENNA	900
697.003.100	LINE VIENNA	1000
697.004.030	LINE COPENHAGEN	300
697.004.070	LINE COPENHAGEN	700
697.004.080	LINE COPENHAGEN	800
697.004.090	LINE COPENHAGEN	900
697.004.100	LINE COPENHAGEN	1000
697.005.030	LINE ATHENS	300
697.005.070	LINE ATHENS	700
697.005.080	LINE ATHENS	800
697.005.090	LINE ATHENS	900
697.005.100	LINE ATHENS	1000
697.006.030	LINE DETROIT	300
697.006.070	LINE DETROIT	700
697.006.080	LINE DETROIT	800
697.006.090	LINE DETROIT	900
697.006.100	LINE DETROIT	1000
697.007.030	LINE NEW YORK	300
697.007.070	LINE NEW YORK	700
697.007.080	LINE NEW YORK	800
697.007.090	LINE NEW YORK	900
697.007.100	LINE NEW YORK	1000
697.008.030	LINE OSLO	300
697.008.070	LINE OSLO	700
697.008.080	LINE OSLO	800
697.008.090	LINE OSLO	900
697.008.100	LINE OSLO	1000
697.104.070	LINE COPENHAGEN VINYL	700
697.104.080	LINE COPENHAGEN VINYL	800
697.104.090	LINE COPENHAGEN VINYL	900
697.104.100	LINE COPENHAGEN VINYL	1000



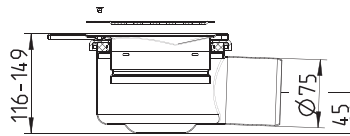
Triangle drains for concrete floors

For details on triangular drains with membrane solution see www.blucher.com



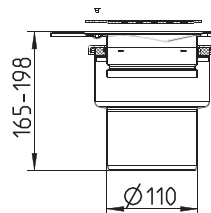
The drains have been designed with double width edges where the drain meets the wall, to tile down onto.

Drain Ø75 horizontal outlet



Type No.	Installation
110.360.075	Corner
110.370.075	Wall

Drain Ø110 vertical outlet



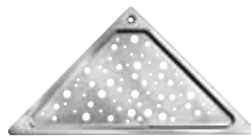
Type No.	Installation
150.360.110	Corner
150.370.110	Wall

Accessories for triangular drains

Grates

BLÜCHER® Drains are supplied with the VIENNA grate as standard. Other grates can be ordered separately using the codes below.

Type No.	Grate style
620.300.030	TRIO OSLO
620.300.031	TRIO ATHENS
620.300.032	TRIO DETROIT
620.300.033	TRIO NEW YORK
620.300.034	TRIO COPENHAGEN
620.300.035	TRIO VIENNA



OSLO



ATHENS



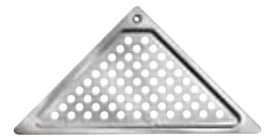
DETROIT



NEW YORK

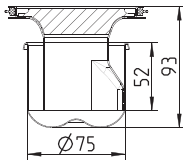


COPENHAGEN



VIENNA

Water trap removable



Type No.

502.052.110

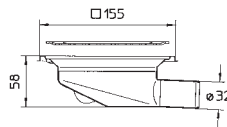
Trap type 502.052.110 has a flow rate of 0,8l/sec with a depth of seal of 52 mm.

Diamond drains for concrete floors

There are lots of variants in the range of diamond shaped BLÜCHER® drains. Below you find the most commonly ordered drains. For details on the full range see www.blucher.com



Mini drain Ø32 horizontal outlet

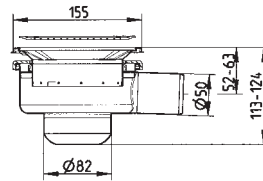


Type no.

181.300.032

Cannot be used with removable water trap

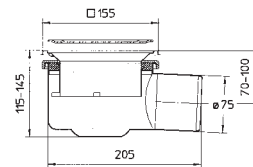
Drain Ø50 horizontal outlet



Type no.

114.300.050

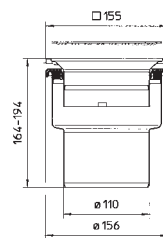
Drain Ø75 horizontal outlet



Type no.

110.300.075

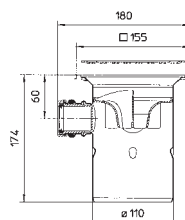
Drain Ø110 vertical outlet



Type no.

150.300.110

Drain Ø110 vertical outlet with 2 side inlets



Type no.

161.300.110

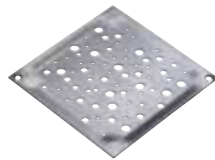
Height adjustable between the top and the outlet for easier installation.

Accessories for diamond drains

Grates

BLÜCHER® Drains are supplied with the VIENNA grate as standard. Other grates can be ordered separately using the codes below.

Type No.	Style
610.155.425	SQUARE OSLO
610.155.427	SQUARE ATHENS
610.155.428	SQUARE DETROIT
610.155.429	SQUARE NEW YORK
610.155.521	SQUARE COPENHAGEN
610.155.421	SQUARE VIENNA



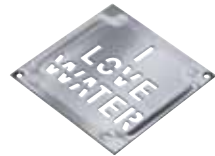
OSLO



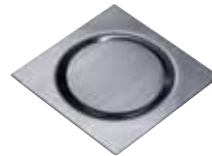
ATHENS



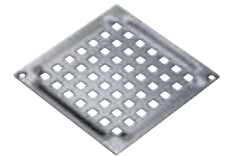
DETROIT



NEW YORK

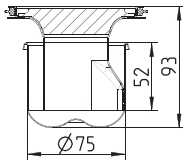


COPENHAGEN



VIENNA

Water trap removable



Type No.

502.052.110

Trap type 502.052.110 has a flow rate of 0,8 l/sec with a depth of seal of 52 mm.

The trap cannot be used with the 181 diamond drain.

BLÜCHER®

At BLÜCHER® we are more than 300 employees that create a annual turnover of more than 50 million euro.

Through know how, dedicated service and common sense we develop, produce and market high quality stainless steel drainage solutions for customers within the housing, commercial, industrial and marine sectors all over the world.

Find your local BLÜCHER® specialist at www.blucher.com

BLÜCHER® EuroPipe

BLÜCHER® Channel

BLÜCHER® Drain



KEEPING UP THE FLOW